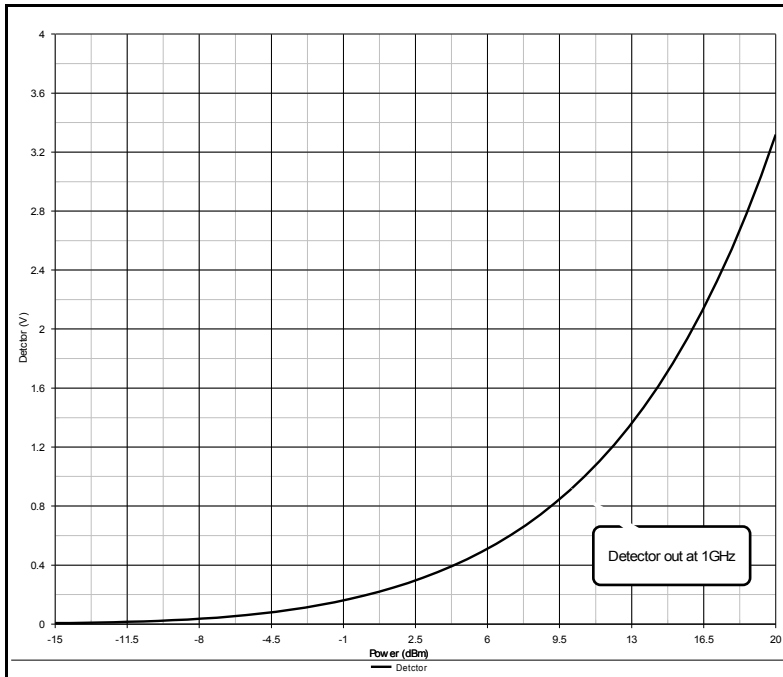




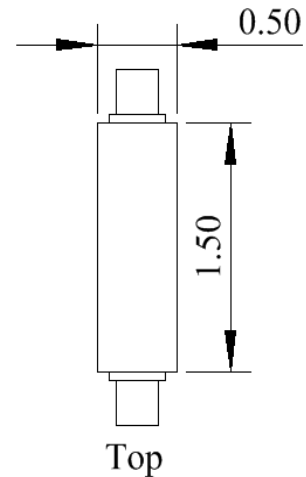
RF Detector GDT4000-A series

* Test label shown

DMCRF's **GDT4000-A series** RF Detectors are designed to for today's RF and microwave environment. No matter the environment, the **GDT4000-A** RF Detector series offers performance and quality workmanship to meet any type of requirement. Proven reliability, low cost, high quality workmanship along with accuracy and durability are only a few attributes of the **GDT4000-A** series RF bias tees.



Detector voltage out at 1GHz



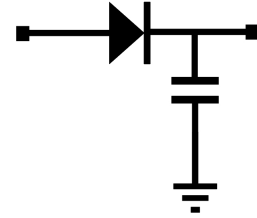
Dimension (inches)



A subsidiary of Digital Microwave Communications

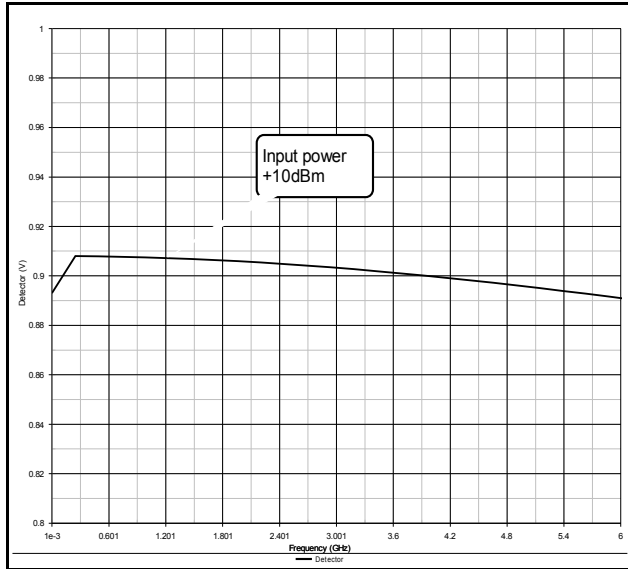
<http://www.dmcdf.com>

823 Anchorage Place
Chula Vista, CA 91914-4534
ph. 1-619-862-7341
fax. 1-619-671-0125

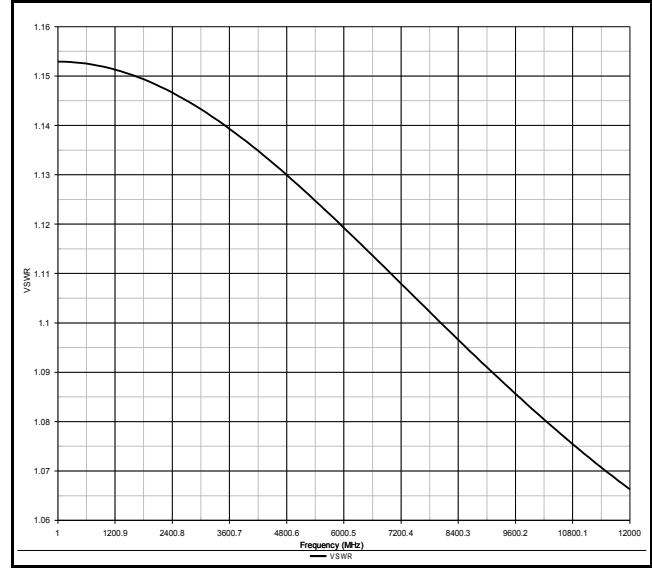


RF Detector

GDT4000-A series



Output voltage vs frequency at +10dBm



Nominal VSWR

Choose *DMCRF's* **GDT4000-A** RF Detector for your next design, prototyping and test needs.

model	Freq range	VDC Variance(nom)	VDC @ 10dBm	Vdc @ +20dBm	RF Max
GDT4000-A	1M - 4GHz	< 0.5 Vdc	0.9Vdc	3Vdc	4Vdc



A subsidiary of Digital Microwave Communications

<http://www.dmcrf.com>

823 Anchorage Place
 Chula Vista, CA 91914-4534
 ph. 1-619-862-7341
 fax. 1.619-671-0125